

# CREATE

Fill in intervention outlines  
Apply to current situation, make complete.



Get stakeholder support.

Unused support & support on incomplete interventions is lost.



Interventions with enough support (of any type) are implemented.



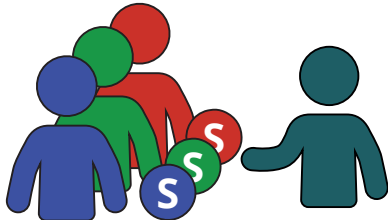
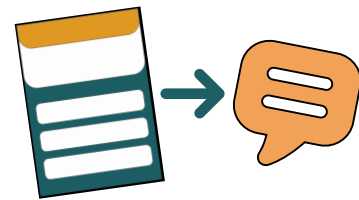
# IMPLEMENT



## Pitch

Initiator pitches intervention.

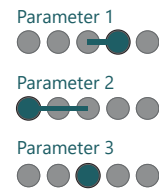
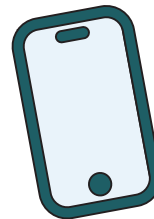
Use questions as guide.



What stakeholders are involved?

## Evaluate

Everyone evaluates pitched intervention on assigned parameters.



# REFLECT



Results are simulated, KPIs update.



Reevaluate goals for next round.

